

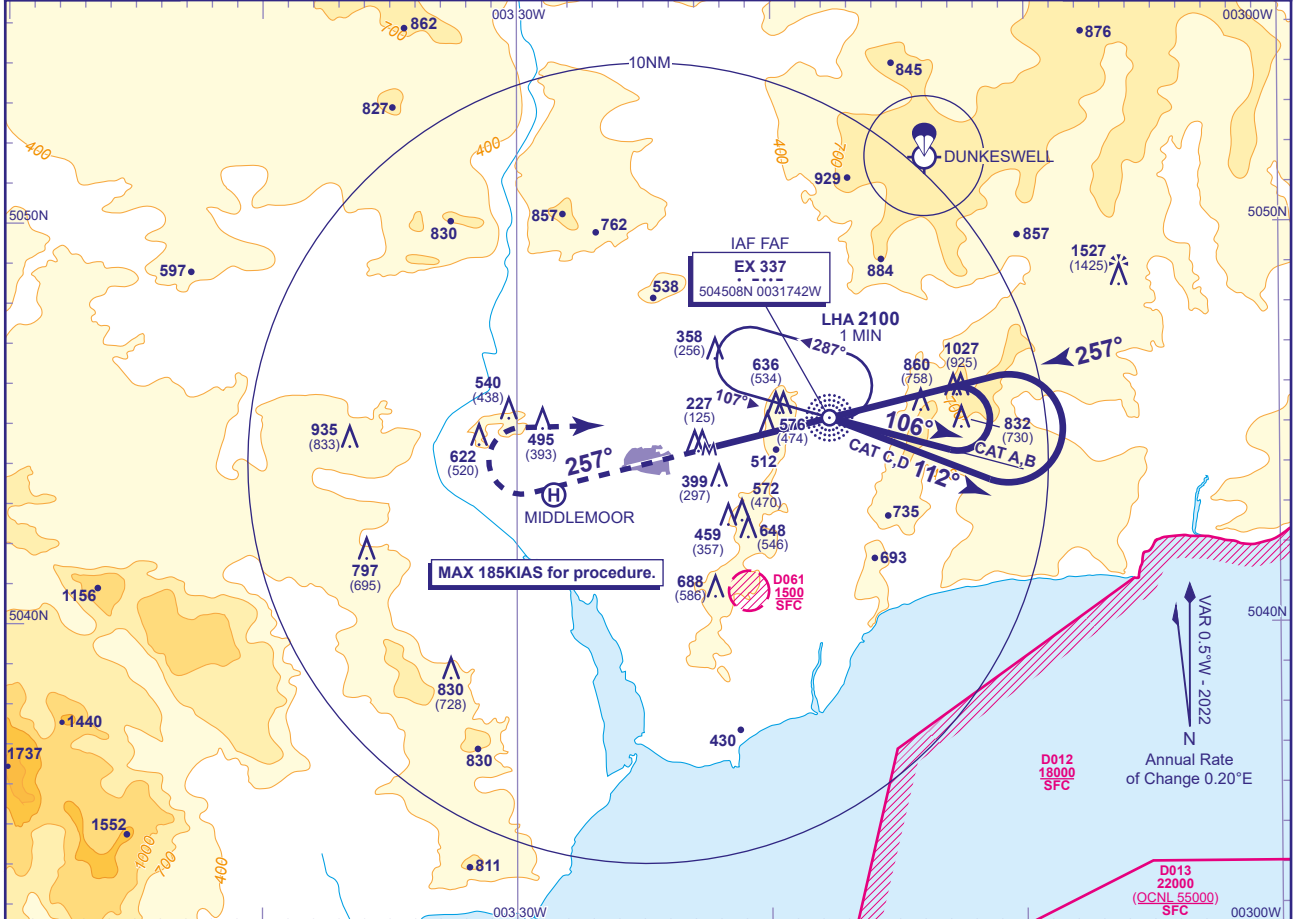
INSTRUMENT APPROACH CHART - ICAO

EXETER
NDB(L)
RWY 26
(ACFT CAT A,B,C,D)



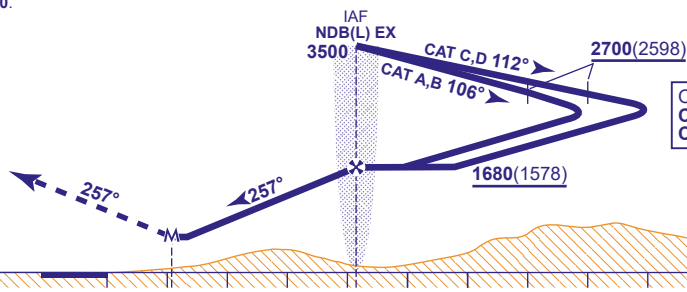
APP	128.980	EXETER APPROACH	AD ELEVATION	102
TWR	119.805	EXETER TOWER	THR ELEVATION	102
RAD	128.980, 123.580	EXETER RADAR	OBSTACLE ELEVATION	1527 AMSL (1425) (ABOVE THR)
ATIS	119.330	EXETER INFORMATION	BEARINGS ARE MAGNETIC	

TRANSITION ALTITUDE
3000



Arrival not below MSA. Shuttle in hold if necessary to 3500.

MAPt 3.1NM after NDB(L) EX
Climb straight ahead to 1100 then climbing turn right to NDB(L) EX at 2500 or as directed.



OUBD TIMING
CAT A,B 1.5 MIN
CAT C,D 1 MIN

Aircraft Category		A	B	C	D	Rate of descent	G/S KT	160	140	120	100	80
OCA (OCH)	NO DME	890(788)	890(788)	890(788)	890(788)		FT/MIN	990	870	740	620	500
VM(C)OCA (OCH AAL)	Total Area	890(788)	890(788)	1090(988)	1090(988)	NDB(L) to MAPt (3.1NM)	MIN:SEC	1:09	1:19	1:33	1:51	2:19

NOTE 1 FAT offset 0.4° from RWY 26 C/L.
2 Lowest altitude to commence procedure from hold after a missed approach is 2500.
3 ATC will normally require aircraft to hold not lower than 3500.

CHANGE (7/21): MAG VAR. MAG TRACKS. D012, D013 VERTICAL LIMITS REVISED.